

The Ring of Kerry Trail Ride



Itinerary

This trail provides an unequalled opportunity to explore the highlands of Kerry with the majestic McGillicuddy Reeks, Ireland's highest mountain range. Ride on country lanes, mountain tracks and some of the beaches at Waterville and on the magnificent 4 mile stretch of golden sand at Rossbeigh. The Iveragh Peninsula, with many places of archaeological and historic interest, stretches southwest from the stables for nearly 40 miles and is highlighted by the world renowned Ring of Kerry.



Saturday

Today you will be arriving. You will be checking-in at the stables and meeting the family to discuss your experience (check-in before 6pm). You will then be taken to your overnight accommodation. Usually, you will be staying at the same location as the other people on your trail ride allowing you to get to know them if you wish before the trail starts.



Sunday

After an Irish breakfast, the day begins with a short trip to the base of Seefinn Mountain, where the first days ride starts. When horses and riders have been introduced, the ride heads off, and up over the Windy Gap, viewing the splendour of Caragh Lake and the valley beyond.

The ride then continues on to Coomasaharn Lake enclosed by Horseshoe Mountain and this is followed by a scenic ride over an Irish Bog before reaching the stables in Mountain Stage. Tonight, you will be staying close to the quaint village of Glenbeigh. Glenbeigh is surrounded almost entirely by mountains and offers a famous friendliness and humour. The beauty of the area is breath-taking, with the River Behy and Rossbeigh Strand close by. History is evident throughout the locality and Winn's Folly Castle is well worth a visit.



Monday

Today, you will spend the day on Rossbeigh beach. You can gallop along stretches of golden sand and pass the tower built more than a century ago, which is a guide mark for ships entering Castlemaine Harbour. The panorama of Dingle and the Iveragh Penninsulas to the north and south are truly breath-taking; lunch on the beach and the afterwards



some more galloping before returning via the Cliff Road. Tonight, you will be staying in the same accommodation as last night.

Tuesday

After breakfast, the morning ride takes horse and rider from Kells Station through the bogs of Cnoc Bawn and on to Liss Bawn, taking in some spectacular views of Caherciveen and its surroundings. Lunch is served alongside a nearby forest. After lunch, you will continue on through Island Boy and the Inny Valley finishing for the day alongside the Tulligane Woods. Tonight, you will be staying near the coastal village of Waterville.

Waterville nestles on a narrow strip of land between Lough Currane and the Atlantic Ocean, in the very centre of south-west Kerry. Situated as it is between the seashore and the impressive mountains and headlands, the area has many interesting routes to offer and many fine beaches. The first Celtic invaders are reputed to have landed in Ballinskelligs Bay, coming ashore near Waterville. These beginnings of the Gaelic nation are echoed by the archaeological remains such as those found on Church Island, at Derrynane Abbey or Skellig Micheal, giving the area a wealth of history.



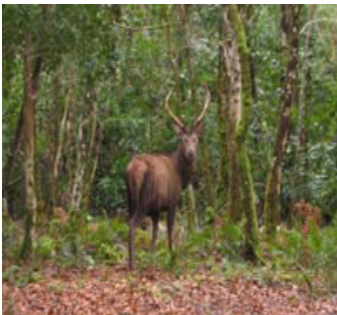
Wednesday

Today brings an adventurous morning spent in Tulligane Woods. You will lunch alongside the Inny River; afterwards, a scenic ride into Waterville via the Old Glencar road is planned, along the shores of the famous fishing lake, Lough Currane.



Thursday

Today begins with a brisk ride to Waterville Beach. You will spend the morning enjoying some exciting gallops. The panorama of Hoggs Head and Ballinskelligs Bay conjures up the magic for the afternoon ride in Waterville. Afterwards, both horse and rider are transferred back to Killarney.



Friday

After breakfast, it will be time to depart.

Prices



Included in the package price of £1155:

- 6 nights accommodation on B&B basis
- 5 days trail riding (4+ hours per day)
- 5 picnic lunches out on trail
- Horse & tack
- Guide

Single Supplement - £210 Price does not include evening meals, arrival or departure transfers.

The trail begins every Saturday from the 9th May 2009 to the last date of departure, 3rd October 2009.

Minimum number of riders for the trail to depart – 2 people.

Transfers can be arranged from Cork, Shannon and Kerry Airport. Additionally, for guests arriving in Dublin there is a regular train service to Killarney where collection can be arranged.

Prices available on request.

Pick-up from Killarney station is free of charge.

Riding Helmets are obligatory in Ireland. For this trail rider all riders should be able to walk, trot and canter competently in an English saddle.

Accommodation will be in family run hotels and Bed & Breakfast accommodations along the route. All rooms will have a private shower with towels & toilet.

Food & Dining

Breakfast is served at the accommodations; full Irish or continental style breakfast.

Lunch - Picnic style out on the trail (bread, fruit, meat, cheese etc.), tea/coffee/water.

Dinner is not included; all villages and towns have a selection of pubs & restaurants, serving food at reasonable prices



Equestrian Escapes Ltd
www.equestrian-escapes.com
Email: info@equestrian-escapes.com
Call for enquiries: 01829 781 123

